



Genetic Studies in Different F₂ Segregating Population for Yield and Fiber Quality Traits in Cotton (*Gossypium hirsutum* L.)

Urooj Fatima Chaudhry¹, Muhammad Nouman Khalid^{2,*}, Shahan Aziz³, Ifrah Amjad⁴, Ayesha Khalid⁵, Hafsa Noor⁶ and Hamza Bin Sajid⁷

^{1,2,4,5,6,7}Department of Plant Breeding and Genetics, University of Agriculture Faisalabad, Pakistan

³Department of Agriculture & Agribusiness Management, University of Karachi

*Corresponding author: noumankhalidpbg@gmail.com

Article History: 22-260

Received: 20-Jun-22

Revised: 20-Jul-22

Accepted: 24-Jul-22

ABSTRACT

Present research was conducted for assessment of six F₂ populations and their parents for various yield and fiber contributing attributes. F₂ segregating population have more variability with a greater adaptation against stress. F₂ generation provide more chance of selection for the improvement of genotypes because every plant is different from another plant. Analysis of variance results indicated that genotypes for all traits were significant except number of monopodial branches and total nodes per plant. Highest value of heritability was calculated for seed cotton yield while lowest value was observed for first fruiting branch node. Correlation matrix for overall F₂ populations along with their parents manifested that yield was significantly and positively associated with plant height, height to node ratio, first fruiting branch node, total bolls per plant, ginning out turn %, lint index and short fiber index. Path analysis results showed that yield was directly and positively influenced by number of sympodial branches per plant, height to node ratio, total bolls per plant, seed index, fiber uniformity, short fiber index, micronaire value and fiber strength. The variety Mubarak showed maximum mean values for yield contributing and fiber related trait like sympodial branches, boll weight, GOT% and lint index, BS80 for bolls per plant and seed cotton yield, CM595 for seeds per boll, fiber strength and fiber length and FH142 for fiber uniformity. F₂ cross combination MNH886×Mubarak followed by CM595×MNH886 showed maximum value of ranges for the different attributes and succeeding generations of these two populations may be used for selection of potential genotypes for development of high yielding varieties.

Key words: Cotton, F₂ population, Variability, Heritability, Correlation, Path analysis.

INTRODUCTION

Cotton also name known as white gold is a valuable fiber crop. American cotton (*Gossypium hirsutum* L.): is a predominant cotton species mainly cultivated for its fiber in more than 80 countries in the world (Razzaq *et al.*, 2021a; Razzaq *et al.*, 2021b). Cotton (*Gossypium spp.*) supplied raw material for the textile industry (Manan *et al.*, 2022). Cotton fiber consumption worldwide was near about 123.6 million bales in 2018-19 and in 2019-20 it was expected up to 126.5 million bales (Anonymous, 2020). World biggest textile industry is running on the bases of cotton fiber having annual income impact about \$600 billion worldwide (Razzaq *et al.*, 2021c). It provides livelihood to 6 million farmers directly and 40 to 50 million people indirectly that are involved in cotton processing and trade (Zafar *et al.*, 2020a). India is leading country in world for the

production of cotton by producing 5770 thousand metric tons, USA at 2nd with 3999 thousand metric tons, China at 3rd with 3500 thousand metric tons, Brazil at 4th with 2787 thousand metric tons and Pakistan ranked 5th position in the world with 1655 thousand metric tons' production (Anonymous, 2020).

Cotton belongs to genus *Gossypium* having more than 50 species containing cultivated and wild species. Cultivated species of cotton are *G. herbaceum*, *G. arboreum*, *G. barbadence* and *G. hirsutum*. The *G. hirsutum* is a tetraploid specie of cotton and its origin is south Mexico. It is cultivated on more than 90% area of world (Zafar *et al.*, 2022c). Cotton seed oil is used as vegetable oil and makes major contribution in the national oil industry (Shuli *et al.*, 2018). Cotton is 2nd major oilseed crop after soybean (Sahar *et al.*, 2021). Pakistan compensates 17.7% cooking oil requirement from the cottonseed oil (Nizamani *et al.*, 2016).

Cite This Article as: Chaudhry UF, Khalid MN, Aziz S, Amjad I, Khalid A, Noor H, Sajid HB, 2022. Genetic studies in different F₂ segregating population for yield and fiber quality traits in cotton (*Gossypium hirsutum* L.). Int J Agri Biosci, 11(1): 59-69. <https://doi.org/10.47278/journal.ijab/2022.009>

Pakistan is an agricultural country and major part of the economy of the country is directly and indirectly depend upon the agriculture. Cotton serves as lifeline of the economy of Pakistan. Its share in the GDP is 0.8 percent and it contributes 4.5% in agriculture value addition. During 2018-19 and 2017-18 the cotton production was 9.86 and 11.946 million bales respectively. A decrease of 17.5% in cotton production was observed during last year due to biotic and abiotic factors. Cotton ginning was also declined by 12.74% due to decline in production (Zafar *et al* 2022a-2022c). Pakistan's cotton yield has been reduced in the last few years due to many reasons. Our production is very low as compared to other cotton growing countries. Main reasons behind this low production are too much rains at sowing time, fluctuation in temperature, high temperature at flowering stage, late harvesting of wheat, delay cotton sowing, reduction in the area of cotton, improper use of production technology and insect pest attack especially CLCuV attack and lack of resistant varieties (Zafar *et al.*, 2020b).

Cotton production commercially increased by growing segregating (F_2) population in many countries, main reason behind that F_2 has maximum variability and gives more chance of selection (Khan, 2011). F_2 have more variability with a greater adaptation against stress. F_2 segregating population of cotton have been reported for the improvement of disease resistant, seedling vigor and cotton yield (Dever and Gannaway, 1992). Cotton breeding program, needed genetic diversity in the germplasm that should be exploited to make improvement in the genetics of cotton crop. It helps us to select the parents with desirable attributes that may be crossed to bring the broaden diversity in the germplasm (Zafar *et al.*, 2022c). In F_2 segregating population every plant is different from all the remaining plants so therefore selection for the desirable traits is easier.

The correlation analysis forecasts the change take place in one attribute by the change in the other attribute (Dahiphale and Deshmukh, 2018). Correlation analysis is an effective tool to identify the association between the different attributes in genetically diverse F_2 segregating population that will be used in the future breeding program for crop improvement (Dahiphale *et al.*, 2015) Magnitude and direction of correlation among yield and yield related attributes must be considered for the selection of the superior genotypes for the highly diverse genetic breeding program (Zafar *et al.*, 2021b). It is may not be possible to select the genotype just only on the basis of yield because yield is a complex multigenic trait and it is controlled by many components of traits. The relationship between yield and yield contributing attributes are estimated by the correlation analysis and provide information for the selection (Zafar *et al.*, 2021c).

Path analysis is used for the estimation of relationship among the independent and dependent variables (Kumar *et al.*, 2019). It is helpful to measure the direct and indirect effects on yield separately. This analysis is helpful to set selection criteria for the future breeding program to enhance seed cotton yield (Deshmukh *et al.* 2019). Heritability estimates the inheritance of attributes that is used for the selection of better plants (Soomro *et al.*, 2008). High heritability gave clear image for the

selection in the breeding program (Ahmad *et al.*, 2019). Keeping in view the importance of F_2 population in cotton breeding program, the research was designed to study correlation and path coefficient analysis to set selection criteria in different F_2 population of cotton.

MATERIALS AND METHODS

This research was carried out in the field experimental area of Department of Plant Breeding and Genetics, University of Agriculture Faisalabad, during kharif season 2019. Experimental material was consisting of 6 of parents and their 6 F_2 populations. The seeds of parents and their F_2 population were sown during the growing season of cotton in June 2019 by using randomized complete block design with 2 replications. Each F_2 population was sown in 5 rows, each have 10 plants and parent were sown in single row in each replication. Keeping row to row 75cm and plant to plant 30cm distance. All cultural and agronomic practices were done such as irrigation, fertilizers, hoeing, thinning and plant protection measures according to the requirement of crop to maintain their proper health.

Parents	BS-80	MNH-886	CIM-595	FH-142	IUB-75	Mubarak
F_2	MNH-886	BS-80	FH-142	FH-142	CIM-595	IUB-75
Crosses	×Mubarak	×Mubarak	×Mubarak	×MNH-886	×MNH-886	×FH-142

Yield Related Traits

Yield related traits; monopodial branches, sympodial branches, plant height(cm): bolls per plant, boll weight(g): seed index(g): seed per boll, height to node ratio, total nodes per plant, first fruiting branch node, GOT%, lint index(g): seed cotton yield(g) were measured at maturity.

Fiber Traits

Fiber length (mm): fiber uniformity percentage, short fiber index, micronaire value ($\mu\text{g}/\text{inch}$): fiber strength (g/tex): reflectance (Rd): maturity index with the help of Uster HVI-900 S. A. Mean was value calculated for further analysis.

Statistical Analysis

The obtained data was analyzed for analysis of variance followed by Steel *et al.* (1997) and simple correlation coefficients was computed following by Kwon and Torrie (1964). Heritability was computed following by Burton and Devane (1953). Categorization of heritability was estimated according to Johnson *et al.* (1955). Path coefficient analysis was carried out to check the indirect and direct effects of different genotype traits on yield with the help of "R" statistical software. This method was followed as given by Dewey and Lu (1959).

RESULTS

Analysis of Variance

Analysis of variance manifested that F_2 population and their parents exhibited significant variation for all the attributes like bolls plant⁻¹, boll weight, lint index, sympodial branches plant⁻¹, plant height, seed index, ginning out turn (%): height to node ratio, seed boll⁻¹, first fruiting branch node, maturity index, fiber length, fiber

uniformity, short fiber index, reflectance, fiber strength, micronaire value while seed cotton yield were highly significant. The monopodial branches per plant and total nodes per plant were non-significant (Table 1).

Table 1: Mean Square value from analysis of variance for yield contributing and fiber related attributes of six F₂ populations and their six parents.

Source	DF	NMP	NSP	PH	NBP	BW	SI	SPB	HNR	FFBN	NP
Block	1	0.02	6.87	2.99	1.00	0.04	0.00	36.57	0.01	0.02	38.46
Genotype	11	0.22 ^{NS}	3.54*	141.38*	14.66*	0.21*	0.36*	26.72*	0.21*	1.15*	32.8 ^{NS}
Error	11	0.09	1.10	34.57	3.82	0.06	0.09	7.86	0.047	0.39	14.31
Source	DF	GOT%	LI	SCY	UHML	UI	SF	MIC	STR	RD	MAT
Block	1	0.28	0.19	4.18	0.00	1.97	0.12	0.00	0.05	0.39	7.51
Genotype	11	3.41*	0.24*	172.26**	0.64*	1.62*	0.27*	0.06*	1.50*	5.64*	1.89*
Error	11	0.94	0.06	27.51	0.15	0.53	0.06	0.01	0.43	1.58	4.41

(α 5%) P<0.01=** (Highly Significant) P<0.05=*(Significant) P>0.05=NS (Non-Significant): NMP (Number of monopodial plant-1): NSP (Number of sympodial plant-1): PH (Plant height): NBP (Number of bolls plant-1): BW (Boll weight): SI (Seed index): SPB (Seed boll-1): HNR (Height to node ratio): FFBN (First fruiting branch node): NP (Number of nodes plant-1): GOT% (Ginning out Turn %): LI (Lint index): SCY (Seed cotton yield): UHML (Fiber length): UI (Fiber uniformity): SF (Short fiber index): MIC (Micronaire value): STR (Fiber strength): RD (Reflectance): MAT (Maturity index)

Table 2: Basic measures of variability for various attributes of F₂ population MNH886×Mubarak

	NSP	PH	NBP	BW	SI	SPB	HNR	FFBN	GOT%	LI	SCY	UHML	UI	SF	MIC	STR	RD	MAT
R	3-18	35.1-142.7	2-26	1.59-4.11	5.21-8.56	11-34	1.51-4.61	6-16	31.23-41.23	2.83-5.61	4.5-85.76	24.67-29.75	77.5-89.3	6.6-9.7	3.37-5.2	23.9-33.5	67.6-81.3	0.8-0.88
M	8.42	90.28	11.92	2.82	7.27	22.06	2.30	11.97	36.92	4.22	36.12	27.06	82.59	7.86	4.31	29.52	75.12	0.84
V	11.34	360.22	29.74	0.38	0.88	32.97	0.31	6.60	7.28	0.59	383.11	1.57	6.94	0.76	0.22	6.16	13.72	0.00
SD	3.37	18.98	5.45	0.62	0.94	5.74	0.56	2.57	2.70	0.77	19.57	1.25	2.64	0.87	0.47	2.48	3.70	0.02
CV	40.00	21.02	45.76	21.97	12.87	26.03	24.23	21.46	7.31	18.16	54.20	4.63	3.19	11.07	10.89	8.40	4.93	2.62

Table 3: Basic measures of variability for various attributes of F₂ population BS80×Mubarak

	NSP	PH	NBP	BW	SI	SPB	HNR	FFBN	GOT%	LI	SCY	UHML	UI	SF	MIC	STR	RD	MAT
R	3-16	54.1-123.9	5-33	1.40-3.86	5.29-8.67	11-33	1.92-3.3	6-16	30.45-44.56	3.01-5.70	9.84-114.72	24.9-28.9	79.2-87.6	6.4-9.6	3.4-5.2	24.7-34.7	68.1-81.2	0.81-0.88
M	8.54	95.58	13.80	2.78	6.77	22.40	2.46	11.63	38.69	4.29	40.85	26.75	83.45	7.82	4.36	28.78	74.85	0.84
V	13.02	261.04	41.75	0.46	0.61	33.89	0.10	7.77	12.01	0.35	551.64	1.33	5.58	0.64	0.17	6.70	11.40	0.00
SD	3.61	16.16	6.46	0.68	0.78	5.82	0.31	2.79	3.47	0.59	23.49	1.15	2.36	0.80	0.41	2.59	3.38	0.02
CV	42.24	16.90	46.82	24.45	11.54	25.99	12.53	23.97	8.96	13.74	57.49	4.30	2.83	10.23	9.46	9.00	4.51	2.07
SE	0.61	2.73	1.09	0.12	0.13	0.98	0.05	0.47	0.59	0.10	3.97	0.20	0.40	0.14	0.07	0.44	0.57	0.00

Table 4: Basic measures of variability for various attributes of F₂ population FH142×Mubarak

	NSP	PH	NBP	BW	SI	SPB	HNR	FFBN	GOT%	LI	SCY	UHML	UI	SF	MIC	STR	RD	MAT
R	2-17	44.2-150.4	3-37	1.82-3.81	4.21-8.78	13-32	1.93-2.95	6-16	28.09-44.85	2.00-5.71	7.5-95.13	24.6-30.1	78.2-89.3	6.7-9.5	3.4-4.9	24.1-32.8	67.6-79.7	0.8-0.88
M	9.03	96.70	15.56	3.01	6.40	24.53	2.38	11.82	39.14	4.11	45.16	27.14	84.03	8.18	4.28	28.80	73.93	0.84
V	14.09	381.37	70.44	0.37	0.71	21.29	0.07	6.21	17.65	0.72	586.60	1.50	9.69	0.75	0.17	4.67	10.37	0.00
SD	3.75	19.53	8.39	0.61	0.84	4.61	0.27	2.49	4.20	0.85	24.22	1.22	3.11	0.87	0.41	2.16	3.22	0.02
CV	41.57	20.19	53.94	20.30	13.12	18.81	11.35	21.08	10.74	20.68	53.63	4.51	3.71	10.62	9.66	7.50	4.36	2.42
SE	0.64	3.35	1.44	0.11	0.14	0.79	0.05	0.43	0.72	0.15	4.15	0.21	0.53	0.15	0.07	0.37	0.55	0.00

Table 5: Basic measures of variability for various attributes of F₂ population FH142×MNH886

	NSP	PH	NBP	BW	SI	SPB	HNR	FFBN	GOT%	LI	SCY	UHML	UI	SF	MIC	STR	RD	MAT
R	3-17	47.5-133.4	1-45	1.17-3.75	4.71-8.64	6-33	1.4-3.4	7-16	24.25-46.95	1.79-5.41	3.2-102.3	24.6-28.9	79.2-87.8	5.8-10.2	3.37-5.2	23.6-35.1	68.1-80.7	0.8-0.88
M	9.84	96.74	17.11	2.62	6.11	20.67	2.39	11.71	38.87	4.15	43.66	26.79	83.89	7.92	4.36	28.84	74.52	0.84
V	18.13	367.60	84.06	0.34	0.84	28.59	0.16	6.44	19.66	0.57	644.06	1.37	6.13	0.86	0.18	9.94	12.81	0.00
SD	4.26	19.17	9.17	0.59	0.92	5.35	0.41	2.54	4.43	0.75	25.38	1.17	2.48	0.93	0.43	3.15	3.58	0.02
CV	43.26	19.82	53.58	22.38	14.99	25.87	16.94	21.67	11.41	18.16	58.13	4.37	2.95	11.73	9.80	10.93	4.80	2.47
SE	0.64	2.86	1.37	0.09	0.14	0.80	0.06	0.38	0.66	0.11	3.78	0.17	0.37	0.14	0.06	0.47	0.53	0.00

Table 6: Basic measures of variability for various attributes of F₂ population CIM595×MNH886

	NSP	PH	NBP	BW	SI	SPB	HNR	FFBN	GOT%	LI	SCY	UHML	UI	SF	MIC	STR	RD	MAT
R	1-15	41.8-132.7	1-31	1.66-4.09	4.49-8.76	13-34	1.4-3.4	1-16	30.27-46.96	2.24-6.40	3-120.91	24.5-30.1	76.7-87.6	6.5-9.6	3.42-5.4	24.1-33.5	67.6-81.3	0.8-0.88
M	7.35	87.20	12.51	2.94	6.42	23.08	2.33	11.11	38.56	4.35	37.22	26.89	82.68	8.12	4.52	29.11	74.37	0.84
V	13.96	510.31	70.87	0.60	0.84	23.80	0.14	9.54	19.30	0.86	626.47	2.13	6.12	0.74	0.23	4.49	15.33	0.00
SD	3.74	22.59	8.42	0.78	0.91	4.88	0.38	3.09	4.39	0.93	25.03	1.46	2.47	0.86	0.48	2.12	3.92	0.02
CV	50.82	25.91	67.27	26.39	14.25	21.14	16.23	27.81	11.39	21.28	67.24	5.43	2.99	10.61	10.60	7.28	5.27	2.45
SE	0.61	3.71	1.38	0.13	0.15	0.80	0.06	0.51	0.72	0.15	4.12	0.24	0.41	0.14	0.08	0.35	0.64	0.00

Descriptive Statistics of six F₂ Population of *Gossypium hirsutum*

Descriptive statistics (Range, mean, standard deviation, variance, coefficient of variation and SE-mean) is exploited to summarize the large data of different plant traits. It provides quick simple description of data. Summary of basic statistics of yield contributing attributes for the F₂ crosses are given in Table 2 to 7.

Mean Performances of Six F₂ Population and their Six Parents for Different Plant Attributes in *Gossypium hirsutum*

Yield related traits

Mean performance of six F₂ population and their six parents indicated that parent Mubarak showed highest sympodial branches (10.45) while F₂ cross combination FH142×MNH886 revealed 2nd highest value (9.9). IUB75 exhibited lowest value (5.5) for this attribute. Maximum plant height was recorded for the parent Mubarak (99.46) followed by F₂ cross combination FH142×Mubarak (97.09) and FH142×MNH886 (96.84) while parent FH142 depicted lowest value (73.23) for this trait. Parent BS80 manifested highest bolls per plant (18.3) followed by F₂ cross FH142×MNH886 (17.14) and FH142×Mubarak (15.73) among all genotypes while parent FH142 inferred lowest bolls per plant (9.25). The highest boll weight was recorded for the parent Mubarak (3.35) followed by CIM595 (3.31). F₂ population MNH886×Mubarak (7.30) and parent MNH886 (7.18) revealed highest value for the seed index and parent FH142 manifested lowest value (6) for this attribute.

Highest seeds per boll were counted for the parent CIM595 (29.16) and IUB75 (26.25) whilst lowest seeds per boll were calculated for the F₂ population IUB75×FH142 (15.76) (Fig. 4.6). Highest height to node ratio was calculated for the parent BS80 (3.13) followed by Mubarak (3.01) and F₂ cross BS80×Mubarak (2.45) while CIM595 exploited lowest value (2.06). Parent BS80 (12.95) followed by Mubarak (12.08) and F₂ population

MNH886×Mubarak (11.97) revealed highest value for the first fruiting branch node while IUB75 inferred lowest value (10.25) for this attribute. Maximum GOT% was recorded for the parent Mubarak (40.88) and BS80 (40.48) while MNH886 exhibited lowest value (36.58) for this trait (Fig. 4.9). Parent Mubarak (5.25) and BS80 (4.46) inferred maximum Lint index value while MNH886 depicted lowest value (3.82) for this trait. Parent BS80 (56.42): Mubarak (46.19): F₂ population FH142×Mubarak (45.42) and FH142×MNH886 (43.85) exploited the highest seed cotton yield while MNH886 inferred lowest value (21.09).

Fiber Traits

Maximum value of fiber length was estimated for the parent CIM595 (27.59) and F₂ cross FH142×Mubarak (27.13) while lowest value (25.71) was calculated for parent BS80. Highest value of fiber uniformity was depicted for the parent FH142 (85.41) and F₂ cross combination FH142×Mubarak (83.99) whilst the lowest value for this attribute was estimated for the MNH886 (81.62). Parent Mubarak (8.29) and F₂ cross combination FH142×Mubarak (8.19) exhibited highest value for the short fiber index while MNH886 manifested lowest value (7.15) for this attribute (Fig. 4.14). Parent IUB75 (4.59) and Mubarak (4.57) recorded for the highest value for the micronaire whilst MNH886 showed lowest value (4.08) for this trait. Parent CIM595 (31.3): Mubarak (30.19) and IUB75 (29.82) recorded for the highest value for the fiber strength while F₂ population IUB75×FH142 manifested lowest value (28.29) for this trait. The maximum value of reflectance was measured for the parent IUB75 (77.55) and MNH886 (77.29) whilst the lowest value (73.74) was estimated for the FH142. The highest value of maturity index was recorded for the parent MNH886 (0.84) followed by F₂ cross combination FH142×Mubarak (0.84): BS80×Mubarak (0.84): CIM595×MNH886 while lowest value was calculated for the parent FH142 (0.80).

Table 7: Basic measures of variability for various attributes of F₂ population IUB75×FH142

	NSP	PH	NBP	BW	SI	SPB	HNR	FFBN	GOT%	LI	SCY	UHML	UI	SF	MIC	STR	RD	MAT
R	3-17	70.1-138.4	3-30	1.33-3.77	5.09-8.67	9-30	1.35-2.92	7-15	30.37-45.92	3.00-5.98	4.32-85.81	25.2-28.9	79.6-86.7	6.6-9.2	3.8-4.86	23.9-34.7	68.8-80.7	0.81-0.88
M	8.44	96.59	12.38	2.14	6.69	16.27	2.25	11.16	38.30	4.12	30.16	27.06	83.09	7.57	4.36	28.19	75.18	0.84
V	22.49	403.76	48.60	0.40	1.01	30.09	0.15	4.38	20.99	0.64	465.16	1.19	4.21	0.56	0.09	7.25	10.18	0.00
SD	4.74	20.09	6.972	0.63	1.00	5.48	0.39	2.09	4.58	0.80	21.57	1.09	2.05	0.75	0.30	2.69	3.19	0.02
CV	56.16	20.80	56.27	29.64	15.06	33.70	17.42	18.74	11.96	19.47	71.50	4.03	2.47	9.91	6.76	9.55	4.24	2.33
SE	1.11	4.73	1.64	0.15	0.23	1.29	0.09	0.49	1.08	0.19	5.08	0.26	0.48	0.18	0.07	0.64	0.75	0.01

NMP (Number of monopodial plant-1): NSP (Number of sympodial plant-1): PH (Plant height): NBP (Number of bolls plant-1): BW (Boll weight): SI (Seed index): SPB (Seed boll-1): HNR (Height to node ratio): FFBN (First fruiting branch node): NP (Number of nodes plant-1): GOT% (Ginning out Turn %): LI (Lint index): SCY (Seed cotton yield): UHML (Fiber length): UI (Fiber uniformity): SF (Short fiber index): MIC (Micronaire value): STR (Fiber strength): RD (Reflectance): MAT (Maturity index)

Table 8: Heritability values for F₂ population and their parents

Attributes	h ² (b.s)	Classification	Attributes	h ² (b.s)	Classification
NSP	0.525	High	LI	0.569	High
PH	0.607	High	SCY	0.724	High
NBP	0.586	High	UHML	0.615	High
BW	0.524	High	UI	0.503	High
SI	0.574	High	SF	0.603	High
SPB	0.545	High	MIC	0.563	High
HNR	0.632	High	STR	0.554	High
FFBN	0.488	Moderate	Rd	0.560	High

GOT %	0.567	High	MAT	0.621	High
NMP (Number of monopodial plant-1): NSP (Number of sympodial plant-1): PH (Plant height): NBP (Number of bolls plant-1): BW (Boll weight): SI (Seed index): SPB (Seed boll-1): HNR (Height to node ratio): FFBN (First fruiting branch node): NP (Number of nodes plant-1): GOT% (Ginning out Turn %): LI (Lint index): SCY (Seed cotton yield): UHML (Fiber length): UI (Fiber uniformity): SF (Short fiber index): MIC (Micronaire value): STR (Fiber strength): RD (Reflectance): MAT (Maturity index)					

Assessment of Heritability in *G. hirsutum* for Various Attributes

It measures the degree of variation in a population’s phenotypic trait due to the genetic variation of the individuals in that group. Except 1st fruiting branch node all traits have high heritability. Seed cotton yield exhibited highest value for heritability. (Table 8).

Correlation Matrix Studies

Correlation matrix for all yield and fiber contributing attributes for six F₂ population and their six parents (combined data) is given in the Table 9. Sympodial branches inferred the positive association with plant height, first fruiting branch node and GOT% while it showed negative linkage with seed per bolls. Plant height positively linked with total bolls per plant, fiber maturity and yield while it depicted negative

association with micronaire value. Height to node ratio exhibited positive correlation with first fruiting branch node, total bolls per plant, GOT% lint index and yield. First fruiting branch node manifested positive linkage with GOT%, short fiber and yield while seed per bolls negatively associated with this trait. Total bolls per plant positively linked with GOT%, fiber maturity and yield while micronaire value negatively associated with this attribute. Boll weight inferred positive linkage with fiber strength. GOT% exhibited positive relationship with lint index, fiber uniformity, short fiber and yield while seed per boll inferred negative linkage with this trait. Lint index exploited positive linkage with short fiber and yield. Seed index manifested positive relationship with fiber maturity. Seed per boll positively associated with fiber strength. Reflectance negatively correlated with fiber length. Fiber uniformity negatively associated with fiber maturity. Micronaire value was negatively correlated with fiber maturity (Table 9).

Table 9: Correlation matrix for various attributes for F₂ population and their parents

	NSP	PH	HNR	FFBN	NBP	BW	GOT	LI	SI	SPB	RD	UHML	UI	SF	MIC	STR	MAT
PH	0.411*																
HNR	0.285	0.377															
FFBN	0.468*	0.340	0.568**														
NBP	0.323	0.491*	0.469*	0.311													
BW	0.039	-0.090	0.205	0.059	-0.169												
GOT	0.512*	0.19	0.65**	0.478*	0.464*	0.04											
LI	-0.035	0.071	0.469*	0.332	0.041	0.293	0.437*										
SI	-0.039	0.287	0.386	0.052	0.174	0.201	-0.183	0.172									
SPB	-0.532**	-0.294	-0.336	-0.502*	-0.311	0.359	-0.451*	-0.086	-0.088								
RD	-0.029	0.039	0.147	-0.289	0.167	-0.142	-0.055	0.048	0.326	-0.106							
UHML	0.226	0.219	-0.272	-0.15	-0.345	-0.015	0.004	-0.011	-0.224	0.231	-0.455*						
UI	0.348	-0.241	-0.072	0.095	0.09	-0.076	0.557**	0.031	-0.455*	-0.306	-0.311	0.243					
SF	0.221	0.350	0.377	0.492*	0.34	-0.081	0.531**	0.539**	-0.066	-0.116	-0.023	0.203	0.148				
MIC	-0.091	-0.412*	-0.269	0.038	-0.415*	0.186	0.188	0.397	-0.571**	0.029	-0.193	0.153	0.365	0.152			
STR	-0.198	-0.054	-0.089	-0.146	-0.246	0.501*	-0.186	0.315	0.122	0.468*	-0.119	0.161	-0.273	-0.221	0.191		
MAT	0.141	0.598**	0.087	-0.024	0.585**	-0.089	-0.099	-0.231	0.431*	-0.005	0.181	-0.057	-0.404*	0.067	-0.629**	0.071	
SCY	0.284	0.417*	0.54**	0.728*	0.515*	0.254	0.574**	0.461*	-0.057	-0.181	-0.339	-0.043	0.208	0.631**	0.145	-0.057	0.073

**= P>0.01, *=P>0.05

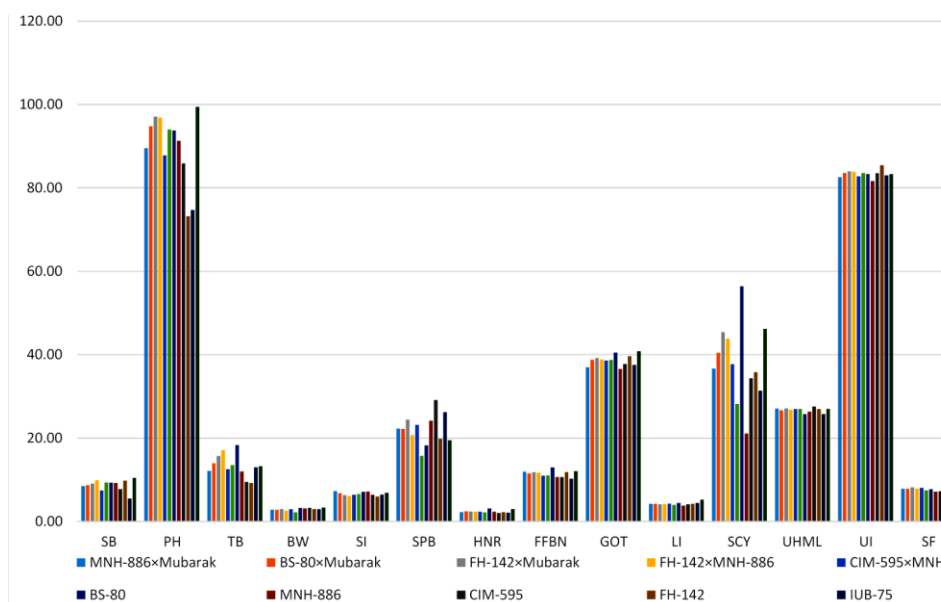


Figure 1: Mean performances of six F₂ population and their six parents for different plant attributes in *Gossypium hirsutum*: NMP (Number of monopodial plant-1): NSP (Number of sympodial plant-1): PH (Plant height): NBP (Number of bolls plant-1): BW (Boll weight): SI (Seed index): SPB (Seed boll-1): HNR (Height to node ratio): FFBN (First fruiting branch node): NP (Number of nodes

plant-1): GOT% (Ginning out Turn %): LI (Lint index): SCY (Seed cotton yield): UHML (Fiber length): UI (Fiber uniformity): SF (Short fiber index): MIC (Micronaire value): STR (Fiber strength): RD (Reflectance): MAT (Maturity index).

Table 10: Correlation matrix for various attributes for F₂ cross combination MNH886×Mubarak

	NSP	PH	HNR	FFBN	NBP	BW	GOT	LI	SI	SPB	RD	UHML	UI	SF	MIC	STR	MAT
PH	0.368*																
HNR	0.078	-0.056															
FFBN	0.266	0.228	-0.188														
NBP	0.503**	0.236	0.135	0.33*													
BW	0.275	0.287	0.117	-0.225	0.269												
GOT	-0.186	-0.036	-0.177	-0.328	-0.182	0.01											
LI	-0.076	-0.315	0.044	-0.106	0.033	-0.174	0.212										
SI	-0.03	-0.184	0.004	0.039	-0.102	0.076	-0.08	0.477**									
SPB	0.237	0.281	0.193	0.076	0.356*	0.711**	0.027	-0.214	-0.176								
RD	-0.013	0.118	0.124	0.07	-0.048	-0.123	-0.105	0.258	0.032	0.091							
UHML	0.161	0.144	0.121	0.045	0.127	0.028	-0.073	-0.045	0.19	0.115	-0.149						
UI	0.131	0.088	0.348*	-0.005	0.296	0.468**	0.092	-0.21	-0.058	0.365*	-0.029	0.071					
SF	-0.15	-0.041	-0.092	0.125	-0.147	-0.127	-0.053	-0.088	-0.228	-0.068	-0.124	-0.079	0.039				
MIC	0.144	0.272	0.325	-0.002	-0.03	0.105	-0.135	-0.332*	-0.319	0.37*	0.211	0.113	0.023	-0.171			
STR	-0.317	-0.198	0.138	0.019	-0.254	-0.058	0.076	-0.146	0.139	0.132	0.053	0.303	0.206	0.146	0.174		
MAT	0.098	0.34*	0.179	-0.051	0.209	0.301	0.075	0.046	0.024	0.2	0.07	0.184	0.204	0.209	0.167	-0.002	
SCY	0.609**	0.278	-0.039	0.144	0.751**	0.429**	-0.017	-0.035	-0.099	0.337*	-0.287	0.055	0.352*	-0.302	-0.061	-0.378*	-0.021

**= P>0.01, *=P>0.05

Correlation table for the F₂ cross combination MNH886×Mubarak is given in the Table 10. Sympodial branches manifested positive association with plant height, total bolls per plant and yield. Plant height positively associated with fiber maturity. Height to node ratio positively associated with fiber uniformity. First fruiting branch node was positively linked with total bolls per plant. Total bolls per plant was positively correlated with seed per boll and yield. Boll weight was positively associated with seed per boll, fiber uniformity and yield. Lint index was positively linked with seed index and negatively linked with micronaire value. Seed per boll was positively associated with fiber uniformity index, micronaire value and yield. Fiber uniformity was positively associated with yield. Fiber strength inferred positive association with yield (Table 10).

Correlation analysis for the F₂ population BS80×Mubarak is given in the Table 11. Sympodial branches were positively associated with total bolls per plant and yield while negatively linked with first fruiting branch node and lint index. Height to node ratio manifested positive association with seed index while negatively associated with total bolls per plant and yield. First fruiting branch node showed positive correlation with lint index. Total bolls per plant exhibited positive association with yield. Boll weight exploited positive relationship with seed per boll and yield (Table 11). Correlation table for the FH142×Mubarak is given in the Table 12. Sympodial branches inferred positive association with plant height, total bolls per plant, lint index and yield. Total bolls per plant exhibited positive relationship with yield. Boll weight manifested positively correlated with seed per boll, fiber maturity and yield while negatively correlated with short fiber (Table 12).

Correlation matrix for the F₂ segregating population “FH142×MNH886” is given in the Table 13. Sympodial branches exhibited positive correlation with plant height, total bolls per plant, fiber maturity and yield. Plant height manifested positive association with height to node ratio, bolls per plant and yield while negatively correlated with reflectance. Height to node ratio manifested positive association with bolls per plant, seed per boll, short fiber

and yield. First fruiting branch node was negatively correlated with micronaire value. Bolls per plant was positively linked with yield. Boll weight inferred positive relationship with seed per boll and yield. GOT% manifested positive linkage with lint index. Lint index exploited positive linkage with fiber uniformity while negatively correlated with seed per boll. Seed per boll was positively associated with yield (Table 13).

Correlation matrix for the CIM595×MNH886 is given in the Table 14. Sympodial branches exhibited positive correlation with plant height, bolls per plant and yield. Plant height manifested positive linkage with height to node ratio, bolls per plant and yield. Height to node ratio revealed positive relationship with lint index and yield. Bolls per plant was positively associated with yield. Boll weight was negatively correlated with lint index. GOT% was positively linked with fiber uniformity index. Lint index inferred positive association with seed index and short fiber. Seed index positively linked with reflectance and micronaire value. Fiber length was positively correlated with fiber uniformity. Short fiber exhibited positive linkage with micronaire value (Table 4.14).

Analysis of correlation for IUB75×FH142 is given in the Table 15. Sympodial branches was positively linked with fiber uniformity. Height to node ratio inferred positive linkage with short fiber and yield. 1st fruiting branch node exhibited positive linkage with boll weight and seeds per boll. Bolls per plant was negatively correlated with seed index. Boll weight was positively associated with seed per boll. Lint index showed negative relationship with reflectance. Seed per boll manifested positive association with yield (Table 15).

Path Coefficient Analysis

Path analysis offers information on the effect of certain attributes on the resulting variable that is yield. It describes direct and indirect effect of certain trait on yield. This technique is helpful in selecting the best performing trait that contributes more to increase the yield potential of the crop plant in the breeding range. Path analysis value is given in Table 16.

Path analysis inferred that sympodial branches, height

to node ratio, bolls per plant, seed index, fiber uniformity, short fiber index, micronaire value, boll weight and fiber strength executed direct positive effects

on yield while plant height, first fruiting branch node, GOT%, lint index, seeds per boll, reflectance, fiber length and fiber maturity had direct negative effects.

Table 11: Correlation matrix for various attributes for F₂ cross combination BS80×Mubarak

	NSP	PH	HNR	FFBN	NBP	BW	GOT	LI	SI	SPB	RD	UHML	UI	SF	MIC	STR	MAT
PH	0.065																
HNR	-0.114	-0.074															
FFBN	-0.336*	0.079	-0.248														
NBP	0.391*	0.054	-0.468**	0.252													
BW	0.183	0.22	-0.174	0.05	0.141												
GOT	-0.015	-0.035	0.121	0.042	-0.029	-0.002											
LI	-0.382*	0.208	-0.157	0.456**	0.082	-0.136	0.078										
SI	0.088	-0.034	0.354**	-0.084	0.163	0.031	-0.037	0.186									
SPB	0.024	0.183	0.026	0.296	0.155	0.657**	0.051	-0.031	-0.208								
RD	0.027	0.062	-0.124	0.113	0.217	0.125	0.016	0.01	-0.011	0.279							
UHML	0.103	-0.239	0.178	0.251	0.1	-0.004	-0.031	-0.021	-0.039	0.224	0.066						
UI	-0.188	-0.198	0.094	0.178	-0.032	-0.099	0.101	0.06	-0.112	-0.038	0.07	-0.174					
SF	0.026	0.081	0.205	-0.216	-0.138	0.117	-0.199	-0.18	0.031	0.049	-0.042	-0.258	-0.283				
MIC	0.042	-0.187	0.008	0.127	-0.022	0.126	0.045	0.282	0.056	0.218	0.266	0.262	-0.049	-0.329			
STR	0.072	0.095	0.289	-0.157	-0.093	-0.113	-0.038	0.222	-0.212	0.194	-0.115	0.195	-0.076	0.076	0.119		
MAT	-0.246	0.131	0.2	-0.058	-0.149	-0.383*	0.052	0.28	-0.073	-0.26	0.244	-0.31	0.076	-0.017	0.04	-0.03	
SCY	0.338*	0.189	-0.459**	0.262	0.82**	0.39*	-0.216	0.135	0.397*	0.263	0.051	0.134	-0.096	-0.13	0.045	-0.131	-0.305

**= P>0.01, *=P>0.05

Table 12: Correlation matrix for various attributes for F₂ cross combination FH142×Mubarak

	NSP	PH	HNR	FFBN	NBP	BW	GOT	LI	SI	SPB	RD	UHML	UI	SF	MIC	STR	MAT
PH	0.369*																
HNR	-0.033	0.032															
FFBN	0.276	0.198	-0.122														
NBP	0.466**	0.106	-0.038	0.187													
BW	0.042	0.185	0.234	-0.106	0.252												
GOT	-0.181	-0.121	-0.132	-0.216	0.268	0.191											
LI	0.344*	0.229	0.227	0.276	0.305	0.323	0.229										
SI	-0.178	-0.178	-0.055	0.031	0.324	-0.063	0.106	-0.157									
SPB	0.255	0.2	0.08	-0.11	0.153	0.364*	0.289	0.095	0.071								
RD	0.087	-0.224	-0.176	-0.123	0.115	-0.229	0.21	0.197	-0.071	-0.072							
UHML	-0.109	-0.052	-0.025	0.057	0.123	0.264	0.034	0.09	0.224	0.028	-0.269						
UI	-0.036	-0.037	-0.258	-0.075	-0.126	-0.032	-0.058	-0.001	-0.081	-0.013	0.001	-0.112					
SF	0.086	-0.011	-0.005	0.169	0.032	-0.377*	-0.131	0.008	-0.15	-0.26	-0.173	0.111	0.003				
MIC	-0.016	-0.124	-0.054	0.141	-0.123	-0.237	0.163	0.273	-0.33	-0.313	0.173	-0.12	0.187	0.306			
STR	0.093	0.039	-0.31	-0.018	0.006	-0.014	-0.144	0.05	-0.224	0.007	-0.029	0.094	0.026	-0.1	0.079		
MAT	0.138	-0.019	0.118	-0.086	0.225	0.471**	0.099	0.328	-0.26	0.043	-0.018	0.14	-0.234	-0.052	0.064	0.119	
SCY	0.465**	0.191	-0.025	0.077	0.882**	0.416*	0.264	0.275	0.195	0.308	0.012	0.063	0.094	-0.177	-0.135	0.074	0.191

**= P>0.01, *=P>0.05

Table 13: Correlation matrix for various attributes for F₂ cross combination FH142×MNH886

	NSP	PH	HNR	FFBN	NBP	BW	GOT	LI	SI	SPB	RD	UHML	UI	SF	MIC	STR	MAT
PH	0.485**																
HNR	0.241	0.361*															
FFBN	0.114	0.11	0.058														
NBP	0.507**	0.644**	0.356*	0.278													
BW	0.14	0.033	0.206	0.113	0.109												
GOT	0.104	-0.189	0.026	0.07	-0.027	0.046											
LI	0.1	-0.254	-0.035	-0.231	0.064	-0.037	0.471**										
SI	-0.021	0.089	0.186	-0.153	0.029	0.29	-0.094	0.25									
SPB	0.249	0.253	0.384**	0.261	0.197	0.521**	-0.069	-0.404**	-0.082								
RD	-0.027	-0.307*	0.012	0.019	-0.233	0.086	0.227	0.094	-0.079	0.053							
UHML	0.022	-0.014	-0.064	0.004	-0.052	0.135	0.206	0.083	0.159	-0.119	0.177						
UI	-0.076	-0.11	-0.216	-0.001	0.043	-0.034	0.292	0.38**	0.033	-0.103	0.032	0.112					
SF	0.187	0.206	0.318*	0.019	0.265	0.01	0.229	0.021	-0.193	0.059	-0.165	0.025	0.147				
MIC	0.124	0.008	0.205	-0.375*	-0.159	-0.184	0.098	0.003	-0.116	0.037	0.131	-0.003	-0.014	0.053			
STR	-0.061	-0.039	-0.015	-0.128	0.183	0.216	0.039	-0.019	-0.029	0.02	0.077	0.053	0.111	0.106	0.01		
MAT	0.395**	-0.015	-0.125	0.05	0.255	0.019	0.068	0.144	-0.085	0.096	-0.103	0.058	0.181	-0.144	-0.005	-0.008	
SCY	0.489**	0.59**	0.511**	0.25	0.816**	0.483**	0.001	0.005	0.107	0.463**	-0.096	0.033	-0.034	0.232	-0.096	0.223	0.211

**= P>0.01, *=P>0.05

Indirect positive effects of sympodial branches effected yield through plant height, height to node ratio, first fruiting branch node, bolls per plant, GOT%, lint

index, seed index, fiber length, fiber uniformity and short fiber. Plant height is indirectly contributing to yield positively through seeds per boll, fiber uniformity,

micronaire value and fiber strength. Height to node ratio had positive indirect influence on yield through sympodial branches, plant height, first fruiting branch node, bolls per

plant, boll weight, GOT%, lint index, seed index, reflectance, short fiber index and fiber maturity. First fruiting branch node had indirect positive impact on yield

Table 14: Correlation matrix for various attributes for F₂ cross combination CIM595×MNH886

	NSP	PH	HNR	FFBN	NBP	BW	GOT	LI	SI	SPB	RD	UHML	UI	SF	MIC	STR	MAT
PH	0.542**																
HNR	0.189	0.495**															
FFBN	-0.049	0.056	-0.066														
NBP	0.676**	0.553**	0.277	0.102													
BW	0.041	-0.168	-0.069	-0.034	-0.15												
GOT	-0.041	0.094	0.032	0.095	0.217	0.028											
LI	-0.216	0.143	0.413*	0.257	-0.001	-0.384*	0.32										
SI	-0.269	0.108	0.24	0.135	-0.072	-0.049	0.234	0.378*									
SPB	0.114	0.139	-0.068	0.257	0.095	0.051	-0.148	-0.089	-0.262								
RD	-0.006	-0.169	-0.225	-0.068	-0.189	0.319	0.044	-0.129	0.338*	-0.103							
UHML	0.083	0.148	0.242	-0.292	0.068	0.18	-0.319	-0.263	-0.078	0.118	0.076						
UI	0.188	0.203	-0.125	0.051	0.158	0.152	0.457**	-0.097	0.216	0.214	0.152	-0.342*					
SF	-0.094	-0.026	0.168	-0.041	-0.201	-0.099	0.127	0.336*	0.17	-0.033	0.258	0.04	-0.183				
MIC	-0.076	-0.06	-0.036	-0.012	-0.062	0.076	-0.085	-0.087	0.379*	-0.123	0.144	-0.228	0.224	-0.462**			
STR	0.082	-0.169	-0.002	-0.059	0.025	-0.045	0.141	0.214	-0.027	-0.136	0.251	0.008	0.094	0.121	-0.317		
MAT	0.05	0.148	0.119	0.088	0.104	0.259	0.307	0.141	0.269	0.139	0.007	0.169	0.102	0.18	-0.108	0.01	
SCY	0.651**	0.556**	0.351*	0.078	0.792**	0.09	0.07	0.071	-0.015	0.161	-0.136	0.176	-0.001	-0.112	-0.068	-0.047	0.147

**= P>0.01, *=P>0.05

Table 15: Correlation matrix for various attributes for F₂ cross combination IUB75×FH142

	NSP	PH	HNR	FFBN	NBP	BW	GOT	LI	SI	SPB	RD	UHML	UI	SF	MIC	STR	MAT
PH	0.384																
HNR	0.219	0.392															
FFBN	0.075	-0.098	0.231														
NBP	0.416	0.005	-0.085	0.076													
BW	0.275	0.121	0.293	0.597**	0.216												
GOT	-0.006	0.173	-0.143	-0.207	0.18	-0.218											
LI	-0.178	0.231	0.236	0.21	-0.342	0.19	0.095										
SI	-0.239	-0.177	0.066	0.172	-0.594**	-0.027	-0.288	0.015									
SPB	0.321	0.298	0.467	0.534*	0.154	0.751**	-0.063	0.053	-0.183								
RD	0.027	-0.111	0.029	-0.315	0.008	-0.094	0.161	-0.494*	0.225	-0.128							
UHML	-0.082	0.363	-0.291	0.163	0.105	0.21	0.31	-0.011	0.166	0.123	0.117						
UI	0.479*	0.048	0.08	-0.071	0.083	0.029	0.317	0.036	0.059	-0.112	0.099	-0.319					
SF	0.072	0.213	0.484*	0.026	-0.037	0.136	-0.434	-0.17	0.281	0.211	-0.232	-0.129	-0.034				
MIC	-0.042	-0.201	0.22	-0.062	0.374	-0.112	0.307	-0.242	0.108	-0.025	0.372	0.132	-0.126	0.12			
STR	0.161	-0.045	-0.196	-0.005	-0.063	-0.28	0.037	-0.255	-0.066	-0.23	0.165	0.045	-0.063	-0.364	-0.218		
MAT	0.252	-0.396	-0.183	0.077	0.169	-0.174	0.205	-0.237	-0.044	-0.197	0.176	-0.294	0.576	-0.176	0.1	0.12	
SCY	0.33	0.109	0.594**	0.33	0.344	0.431	-0.189	-0.245	-0.062	0.705**	0.082	-0.176	-0.046	0.499	0.386	-0.224	-0.046

**= P>0.01, *=P>0.05: NMP (Number of monopodial plant-1): NSP (Number of sympodial plant-1): PH (Plant height): NBP (Number of bolls plant-1): BW (Boll weight): SI (Seed index): SPB (Seed boll-1): HNR (Height to node ratio): FFBN (First fruiting branch node): NP (Number of nodes plant-1): GOT% (Ginning out Turn %): LI (Lint index): SCY (Seed cotton yield): UHML (Fiber length): UI (Fiber uniformity): SF (Short fiber index): MIC (Micronaire value): STR (Fiber strength): RD (Reflectance): MAT (Maturity index)

via seeds per boll, reflectance, micronaire value and fiber strength. Bolls per plant indirectly effect in positive direction on yield via sympodial branches, plant height, height to node ratio, first fruiting branch node, GOT%, lint index, seed index, short fiber and fiber maturity. Boll weight influenced yield indirectly in a positive way via sympodial branches, plant height, bolls per plant, reflectance, fiber length, fiber uniformity and fiber maturity.

GOT affects yield positively through seed index, seed per boll, reflectance, fiber length, fiber strength and maturity index. Indirect effect of lint index on yield was positive through seed per boll, fiber length and maturity index. Seed index indirect positive impact on yield through sympodial branches, plant height, height to node ratio, first fruiting branch node, bolls per plant, boll weight, lint index, seed index, fiber length, fiber strength and maturity index. Indirect effects of seed per boll on

yield was positive through sympodial branches, plant height, height to node ratio, first fruiting branch node, bolls per plant, GOT%, lint index, seed index, reflectance, fiber uniformity and short fiber. Reflectance indirectly positively influenced on yield via sympodial branches, first fruiting branch node, bolls per plant, boll weight, GOT%, seed per boll, fiber length, fiber uniformity, short fiber and micronaire value.

Fiber length had indirect positive effect on yield through height to node ratio, bolls per plant, boll weight, GOT%, lint index, seed index, reflectance and maturity index. Indirect effect of fiber uniformity on yield was positive through sympodial branches, first fruiting branch node, GOT%, lint index, fiber length, short fiber index and micronaire value. Short fiber index had indirect effect on yield in a positive way through sympodial branches, plant height, height to node ratio, first fruiting branch node, bolls per plant, boll weight, GOT%, lint index, fiber length, fiber

uniformity and micronaire value. Micronaire value positively indirectly effect on yield through height to node ratio, boll weight, GOT%, lint index, seed per boll, staple

length, fiber uniformity, short fiber and fiber strength. Staple strength indirect positive influence on yield through boll weight, lint index, seed index, seed per boll,

Table 16: Path analysis of different attributes of F₂ population and their parents

	NSP	PH	HNR	FFBN	NBP	BW	GOT	LI	SI	SPB	RD	UHML	UI	SF	MIC	STR	MAT
NSP	0.433	-0.218	1.575	-0.423	0.055	0.030	-0.960	-0.138	0.097	0.311	0.249	-0.111	0.036	0.315	-0.575	-0.378	0.053
PH	0.339	-0.278	1.490	-0.256	0.896	0.053	-0.840	-0.138	0.171	0.118	-0.040	-0.041	-0.032	0.408	-1.201	-0.054	-0.214
HNR	0.355	-0.215	1.920	-0.498	0.837	-0.225	-1.446	-0.507	0.178	0.256	-0.133	0.117	-0.001	0.486	0.055	-0.050	-0.082
FFBN	0.421	-0.163	2.198	-0.435	1.028	-0.109	-1.895	-0.229	0.184	0.239	0.188	-0.033	0.093	0.562	-0.574	-0.446	-0.019
NBP	0.022	-0.229	1.481	-0.412	1.086	0.068	-0.498	-0.086	0.043	0.184	0.047	0.182	-0.038	0.310	-0.781	-0.380	-0.130
BW	-0.038	0.044	1.294	-0.142	-0.221	0.334	-0.711	-0.341	0.076	-0.188	0.050	0.059	-0.019	0.131	0.099	0.512	0.047
GOT	0.243	-0.137	1.627	-0.483	0.317	-0.139	-1.706	-0.497	-0.071	0.268	0.365	0.003	0.068	0.527	0.841	-0.286	0.134
LI	0.113	-0.072	1.841	-0.189	0.176	-0.216	-1.603	-0.529	0.030	0.084	-0.582	0.034	0.015	0.429	0.822	0.170	0.092
SI	0.134	-0.151	1.091	-0.254	0.149	-0.080	0.388	-0.052	0.314	0.061	-0.511	0.111	-0.127	-0.081	-0.898	0.206	-0.193
SPB	-0.398	0.097	-1.452	0.308	-0.590	-0.185	1.352	0.131	-0.056	-0.338	0.269	-0.000	-0.032	-0.409	0.184	0.674	-0.002
RD	-0.117	-0.012	0.277	0.088	-0.056	0.018	0.674	-0.334	0.174	0.099	-0.923	0.159	-0.096	-0.085	-0.214	0.012	-0.040
UHML	0.177	-0.042	-0.834	-0.054	-0.730	0.073	0.021	0.067	-0.129	-0.000	0.541	-0.270	0.036	0.189	0.428	0.211	0.082
UI	0.143	0.081	-0.021	-0.367	-0.382	0.058	-1.055	-0.074	-0.364	0.098	0.805	-0.089	0.110	0.279	1.399	-0.324	0.299
SF	0.204	-0.170	1.399	-0.367	0.505	-0.066	-1.349	-0.341	-0.038	0.208	0.117	-0.077	0.046	0.666	0.190	-0.192	0.024
MIC	-0.190	0.255	0.080	0.191	-0.647	-0.025	-1.095	-0.331	-0.215	-0.047	0.151	-0.088	0.117	0.096	1.309	0.076	0.317
STR	-0.259	0.024	-0.153	0.307	-0.653	-0.272	0.773	-0.142	0.102	-0.362	-0.018	-0.090	-0.056	-0.203	0.158	0.631	0.029
MAT	-0.092	-0.236	0.627	-0.034	0.5613	0.0634	0.9129	0.1951	0.241	-0.003	-0.146	0.088	-0.130	-0.063	-1.650	-0.073	-0.251

NMP (Number of monopodial plant-1): NSP (Number of sympodial plant-1): PH (Plant height): NBP (Number of bolls plant-1): BW (Boll weight): SI (Seed index): SPB (Seed boll-1): HNR (Height to node ratio): FFBN (First fruiting branch node): NP (Number of nodes plant-1): GOT% (Ginning out Turn %): LI (Lint index): SCY (Seed cotton yield): UHML (Fiber length): UI (Fiber uniformity): SF (Short fiber index): MIC (Micronaire value): STR (Fiber strength): RD (Reflectance): MAT (Maturity index)

reflectance, fiber length and micronaire value. Maturity index had indirect positive effect on yield through sympodial branches, boll weight, GOT%, lint index, fiber length, fiber uniformity, short fiber, micronaire value and staple strength.

DISCUSSION

Pakistan is an agricultural country and major part of the economy of the country is directly and indirectly dependent on agriculture (Shuli *et al.*, 2018). Cotton is famous as lifeline of the economy of Pakistan. Its share 0.8 percent in the GDP and contribute 4.5% in agriculture value addition (Anonymous, 2018-2019). Cotton production decreased from the last decade due to many reasons (Rehman *et al.*, 2020). Cotton production had been commercially increased by growing segregating (F₂) population (Parre and Patil, 2021) in many countries like China and India that's way the present research was designed to evaluate the potential of different F₂ populations for seed cotton yield and fiber quality traits.

The success of breeding program depends mainly upon genetic variability in segregating population. In population improvement, determination of the extent of genetic variability is important for trait improvement (Komala *et al.*, 2018). Analysis of variance executed that all genotypes were significantly different for all the attributes under study except for monopodial branches per plant and total nodes per plant. Our results are in accordance with Shuli *et al.* (2018) who reported significant differences for plant height, number of sympodial branches, number of bolls, staple length and fiber fineness. Rehman *et al.* (2014) reported significant differences for number of sympodia per plant and ginning out turn. Nawaz *et al.* (2019) also reported significant differences for bolls number plant-1, weight of boll, ginning out turn and yield of seed cotton plant-1. Maximum value of ranges of traits were calculated for F₂

cross combination MNH886×Mubarak and CIM595×MNH886 for most of the yield and fiber related traits under study. These results showed that maximum variation was present in MNH886×Mubarak followed by CIM595×MNH886. Succeeding segregating population of these two F₂ cross combination may be because ultimate goal of plant breeder is to find out more variation in genotypes to develop high yielding and resistant genotypes (Khokhar *et al.*, 2017; Joshi and Patil, 2018; Monicashree and Balu, 2018).

Heritability measures the degree of variation in a population's phenotypic attributes due to the genetic variation of the individuals in that group (Meena *et al.*, 2022). All the traits showed high value of heritability except first fruiting branch node which exhibited moderate heritability. Highest value of heritability was calculated for seed cotton yield. Gnanasekaran *et al.* (2020) also observed high heritability for the number of monopodia per plant, the number of bolls per plant, seed index, lint index, GOT, uniformity ratio, fiber fineness and seed cotton yield per plant.

Computation of correlation between yield and yield attributing traits is of considerable importance in plant selection (Babu *et al.* 2017). Correlation matrix for all yield and fiber contributing attributes for six F₂ population and their six parents showed that plant height was positively linked with total bolls per plant, fiber maturity and yield while it depicted negative association with micronaire value. Height to node ratio exhibited positive correlation with first fruiting branch node, total bolls per plant, GOT% lint index and yield. Total bolls per plant positively linked with GOT%, fiber maturity and yield while micronaire value negatively associated with this attribute. Boll weight inferred positive linkage with fiber strength. Nikhil *et al.* (2018) also reported the significant positive correlation for seed cotton yield per plant with number of monopodia, number of bolls per plant, boll weight and lint index. Similar results were also

observed by Gnanasekaran *et al.* (2020); Reddy *et al.* (2017). Monisha, (2018) revealed that seed cotton yield exhibited positive and highly significant correlation with boll weight, lint index and ginning out turn Lint index exploited positive linkage with short fiber and yield. Seed index manifested positive relationship with fiber maturity while fiber uniformity and micronaire value exhibited negative linkage for this attribute. These results are in accordance with Patil *et al.* (2017); Memon *et al.* (2017); Nawaz *et al.* (2019). Reflectance was negatively correlated with fiber length. Fiber uniformity was negatively associated with fiber maturity. Short fiber positively linked with yield. Micronaire value negatively correlated with fiber maturity. Naik *et al.* (2019) indicated that lint index (g): micronaire value and uniformity ratio were found to have significant positive association with seed cotton yield plant-1.

The study of path coefficients enable breeder to concentrate on the variable which show a high direct effect on seed cotton yield. The genotypic correlation coefficient of seed cotton yield with other yield contributing and fibre quality traits were further partitioned into direct and indirect effects (Pujer *et al.*, 2014; Aarthi *et al.*, 2018; Anjani *et al.*, 2020). Direct positive effects give us a direction that we should more focus on these attributes during selection. Nikhil *et al.* (2018) showed that the path analysis indicated that boll weight and number of bolls per plant had highest direct effect on seed cotton yield per plant, whereas traits like plant height, UHML, fiber strength and lint index had direct negative effect on yield. Similar results were also observed by Patil *et al.* (2017); Memon *et al.* (2017); Tilak *et al.* (2017) and Reddy *et al.* (2017). Tonk *et al.* (2018) studied that seed cotton yield was not negatively associated with fiber quality properties. Dahiphale and Deshmukh (2018) observed that Lint kg/ha exhibited the highest magnitude of direct effects on seed cotton yield, followed by fiber length, plant height, bolls and sympodia/plant.

Conclusion

The results discussed above indicate that correlation and direct and indirect effect estimates vary for different traits with variation in genetic material based on yield component traits and fiber properties. Hence, correlations and direct and indirect effect estimation would provide useful information for planning a successful breeding program if the genetic material is grouped for yield and fiber quality characters and also it is essential to devise suitable breeding methodologies for simultaneous improvement of both yield and quality parameters involving three-way crosses, modified back crosses or recurrent selection.

REFERENCES

- Aarthi, V., Balu, P. A., & Premalatha, N. (2018). Genetic variability studies in germplasm of upland cotton (*Gossypium hirsutum* L.). *Electronic Journal of Plant Breeding*, 9(4), 1600-1605.
- Ahmad, S., Iqbal, M. Z., Hussain, A., Sadiq, M. A., & Jabbar, A. (2003). Gene action and heritability studies in cotton (*Gossypium hirsutum* L.). *Online J Biol Sci*, 4, 443-450.
- Anjani, A., Padma, V., Ramana, J. V., & Satish, Y. (2020). Evaluation of genetic parameters of agro-morpho-quality traits in American cotton (*Gossypium hirsutum* L.). *Electronic Journal of Plant Breeding*, 11(1), 279-282.
- Anonymous, 2018-19. Pakistan Economic Survey, Ministry of Finance, Economic Advisor's Wing, Islamabad
- BABU, B. J., Satish, Y., AHAMED, M., & RAO, V. S. (2017). Correlation and path coefficient analysis for yield and yield component traits in upland cotton (*Gossypium hirsutum* L.). *ANGRAU*, 46.
- Burton, G. W., & Devane, D. E. (1953). Estimating heritability in tall fescue (*Festuca arundinacea*) from replicated clonal material I. *Agronomy journal*, 45(10), 478-481.
- Dahiphale, K. D., & Deshmukh, J. D. (2018). Genetic variability, correlation and path coefficient analysis for yield and its attributing traits in cotton (*Gossypium hirsutum* L.). *Journal of Cotton Research and Development*, 32(1), 38-46.
- Deshmukh, M. R., Deosarkar, D. B., Deshmukh, J. D., & Chinchane, V. N. (2019). Correlation and path coefficient analysis of yield contributing and fiber quality traits in Desi cotton (*Gossypium arboreum* L.). *International Journal of Chemical Studies*, 7(3), 585-589.
- Dever, J. K., & Gannaway, J. R. (1992). Relative fiber uniformity between parent and F1 and F2 generations in cotton. *Crop science*, 32(6), 1402-1408.
- Dewey, D. R., & Lu, K. (1959). A correlation and path-coefficient analysis of components of crested wheatgrass seed production I. *Agronomy journal*, 51(9), 515-518.
- Gnanasekaran, M., Thiyagu, K., & Gunasekaran, M. (2020). Studies on genetic variability correlation and path analysis in upland cotton. *Electronic Journal of Plant Breeding*, 11(03), 981-986.
- Johnson, H. W., Robinson, H. F., & Comstock, R. E. (1955). Estimates of genetic and environmental variability in soybeans. *Agronomy journal*, 47(7), 314-318.
- Joshi, V., & Patil, B. R. (2018). Genetic variability and heritability study in F2 population for yield, yield attributes and fibre quality traits in cotton (*Gossypium hirsutum* L.). *Journal of Pharmacognosy and Phytochemistry*, 7(4), 2816-2818.
- Khan, N. U. (2011). Economic heterosis for morpho-yield traits in F1 and F2 diallel crosses of upland cotton. *Sabrao J. Breed. Genet*, 43(2), 144-164.
- Khokhar, E. S., Shakeel, A., Maqbool, M. A., Anwar, M. W., Tanveer, Z., & Irfan, M. F. (2017). Genetic study of cotton (*Gossypium hirsutum* L.) genotypes for different agronomic, yield and quality traits. *Pakistan Journal of Agricultural Research*, 30(4).
- Komala, M., Ganesan, N. M., & Kumar, M. (2018). Genetic variability, heritability and correlation analysis in F2 populations of ratoon upland cotton hybrids. *International Journal of Agriculture, Environment and Biotechnology*, 11(6), 815-827.
- Kumar, C. P. S., Prasad, V., Rajan, R. E. B., Joshi, J. L., & Thirugnanakumar, S. (2019). Studies on correlation and path-coefficient analysis for seed cotton yield and its contributing traits in cotton (*Gossypium hirsutum* l.). *Plant Archives*, 19(1), 683-686.
- Kwon, S., & Torrie, J. (1964). Heritability and interrelationship among traits of two soybean populations. *Crop Science*, 4, 196-198.
- Manan, A., Zafar, M. M., Ren, M., Khurshid, M., Sahar, A., Rehman, A., ... & Shakeel, A. (2022). Genetic analysis of biochemical, fiber yield and quality traits of upland cotton under high-temperature. *Plant Production Science*, 25(1), 105-119.
- Meena, A., Patil, S., & Verma, L. (2022). Genetic Variability and Heritability Study in Double Cross F3 Lines of Cotton

- (G. hirsutum L.). In *Biological Forum—An International Journal* (Vol. 14, No. 1, pp. 656-660).
- Memon, S., Gandahi, A. W. B. N., Yasir, T. A., Sarki, S. M., Wasaya, A., Mallano, I. A., ... & Khetran, A. S. (2017). Evaluation of genetic divergence, character associations and path analysis in upland cotton genotypes. *Pure and Applied Biology (PAB)*, 6(4), 1516-1521.
- Monicashree, C., & Balu, P. A. (2018). Association and path analysis studies of yield and fibre quality traits in intraspecific hybrids of upland cotton (*Gossypium hirsutum* L.). *Research Journal of Agricultural Sciences*, 9(5), 1101-1106.
- Monisha, K. (2018). Genetic variability and correlation studies in upland cotton (*Gossypium hirsutum* L.). *Electronic Journal of Plant Breeding*, 9(3), 1053-1059.
- Naik, K. S., Satish, Y., Babu, J. D. P., & Rao, V. S. (2019). Estimates of direct and indirect effects among yield, yield contributing and quality traits in American cotton (*Gossypium hirsutum* L.). *Journal of Research ANGRAU*, 47(1), 40-47.
- Nawaz, B., Sattar, S., & Malik, T. A. (2019). Genetic analysis of yield components and fiber quality parameters in upland cotton. *International Multidisciplinary Research Journal*, 9, 13-19.
- Nikhil, P. G., Nidagundi, J. M., & Hugar, A. (2018). Correlation and path analysis studies of yield and fibre quality traits in cotton (*Gossypium hirsutum* L.). *Journal of Pharmacognosy and Phytochemistry*, 7(5), 2596-2599.
- FaizaNizamani, M. J. B., Baloch, A. W., Buriro, M., Nizamani, G. S., Nizamani, M. R., & Baloch, I. A. (2017). Genetic distance, heritability and correlation analysis for yield and fibre quality traits in upland cotton genotypes. *Pakistan Journal of Biotechnology*, 14(1), 29-36.
- Parre, S., & Patil, R. S. (2021). Genetic variability studies in early segregation generation (F3) of intra-hirsutum cotton hybrids of Line x Tester crosses under the rain-fed situation. *The Pharma Innovation J.*, 10 (3): 951, 955.
- Patil, H. V., Deosarkar, D. B., & Arbad, S. K. (2017). Correlation and path analysis in upland cotton (*Gossypium hirsutum* L.). *Journal of Cotton Research and Development*, 31(1), 19-23.
- Pujer, S., Siwach, S. S., Deshmukh, J., Sangwan, R. S., & Sangwan, O. (2014). Genetic variability, correlation and path analysis in upland cotton (*Gossypium hirsutum* L.). *Electronic Journal of Plant Breeding*, 5(2), 284-289.
- Razzaq, A., Ali, A., Zafar, M. M., Nawaz, A., Xiaoying, D., Pengtao, L., ... & Youlu, Y. (2021). Pyramiding of cry toxins and methanol producing genes to increase insect resistance in cotton. *GM Crops & Food*, 12(1), 382-395.
- Razzaq, A., Zafar, M. M., Ali, A., Hafeez, A., Sharif, F., Guan, X., ... & Yuan, Y. (2022). The pivotal role of major chromosomes of sub-genomes A and D in fiber quality traits of cotton. *Frontiers in Genetics*, 2249.
- Razzaq, A., Zafar, M. M., Ali, A., Hafeez, A., Batool, W., Shi, Y., ... & Yuan, Y. (2021). Cotton germplasm improvement and progress in Pakistan. *Journal of Cotton Research*, 4(1), 1-14.
- Razzaq, A., Zafar, M. M., Li, P., Qun, G., Deng, X., Ali, A., ... & Yuan, Y. (2021). Transformation and Overexpression of Primary Cell Wall Synthesis-Related Zinc Finger Gene Gh_A07G1537 to Improve Fiber Length in Cotton. *Frontiers in Plant Science*, 2561.
- Reddy, K. B., Reddy, V. C., Ahamed, M. L., Naidu, T. C. M., & Rao, V. S. (2017). Character association and path coefficient analysis for yield and component traits in upland cotton (*Gossypium hirsutum* L.). *Journal of Cotton Research and Development*, 31(1), 29-33.
- Rehman, A., Mustafa, N., DU, X., & Azhar, M. T. (2020). Heritability and correlation analysis of morphological and yield traits in genetically modified cotton. *Journal of cotton research*, 3(1), 1-9.
- Rehman, A., Mariam, R., Mirbahar, A. A., & Saifullah, A. (2014). Biometrical association of plant height and yield components in *Gossypium hirsutum* L. *International Journal of Biology and Biotechnology*, 11(1), 155-159.
- Sahar, A., Zafar, M. M., Razzaq, A., Manan, A., Haroon, M., Sajid, S., ... & Yuan, Y. (2021). Genetic variability for yield and fiber related traits in genetically modified cotton. *Journal of Cotton Research*, 4(1), 1-10.
- Shuli, F., Jarwar, A. H., Wang, X., Wang, L., & Ma, Q. (2018). Overview of the cotton in Pakistan and its future prospects. *Pakistan Journal of Agricultural Research*, 31(4), 396.
- Soomro, B.A., Channa, M.H., & Ahmad, M. (1982). Correlation studies in *Gossypium hirsutum* L. *Pakistan Journal of Agriculture Research*, 2, 39-51.
- Soomro, Z. A., Larik, A. S., Kumbhar, M. B., Khan, N. U., & Panhwar, N. A. (2008). Correlation and path analysis in hybrid cotton. *Sabrao Journal of Breeding & Genetics*, 40(1), 49-56.
- Steel, R.D.G., Torrie, J.H., & Dickey, D.A. (1997). *Principles and procedures of statistics: a biometrical approach*, (3rd ed) McGraw Hill Book, New York USA
- Tilak, R., Thind, S. K., & Grewal, I. S. (2017). Correlation and path coefficient analysis of yield with yield attributing characters in cotton (*Gossypium hirsutum* L.). *Environment and Ecology*, 35(2C), 1228-1232.
- Tonk, F. A., Istiqlil, D., Tosun, M., Ilker, E., & Çivi, G. (2018). Correlation And Path Analysis In Yield And Quality Traits In F3 And F 4 Generation Of Carmen X Devetüyü-176. *JAPS: Journal of Animal & Plant Sciences*, 28(2).
- Zafar, M. M., Mustafa, G., Shoukat, F., Idrees, A., Ali, A., Sharif, F., ... & Li, F. (2022b). Heterologous expression of cry3Bb1 and cry3 genes for enhanced resistance against insect pests in cotton. *Scientific Reports*, 12(1), 10878.
- Zafar, M. M., Manan, A., Razzaq, A., Zulfqar, M., Saeed, A., Kashif, M., ... & Ren, M. (2021b). Exploiting agronomic and biochemical traits to develop heat resilient cotton cultivars under climate change scenarios. *Agronomy*, 11(9), 1885.
- Zafar, M. M., Razzaq, A., Farooq, M. A., Rehman, A., Firdous, H., Shakeel, A., ... & Ren, M. (2020a). Insect resistance management in *Bacillus thuringiensis* cotton by MGPS (multiple genes pyramiding and silencing). *Journal of Cotton Research*, 3, 1-13.
- Zafar, M. M., Zhang, Y., Farooq, M. A., Ali, A., Firdous, H., Haseeb, M., ... & Ren, M. (2022a). Biochemical and Associated Agronomic Traits in *Gossypium hirsutum* L. under High Temperature Stress. *Agronomy*, 12(6), 1310.
- Zafar, M. M., Jia, X., Shakeel, A., Sarfraz, Z., Manan, A., Imran, A., ... & Ren, M. (2022b). Unraveling heat tolerance in upland cotton (*Gossypium hirsutum* L.) using univariate and multivariate analysis. *Frontiers in plant science*, 12, 727835.
- Zafar, M. M., Rehman, A., Razzaq, A., Parvaiz, A., Mustafa, G., Sharif, F., ... & Ren, M. (2022c). Genome-wide characterization and expression analysis of Erf gene family in cotton. *BMC plant biology*, 22(1), 134.